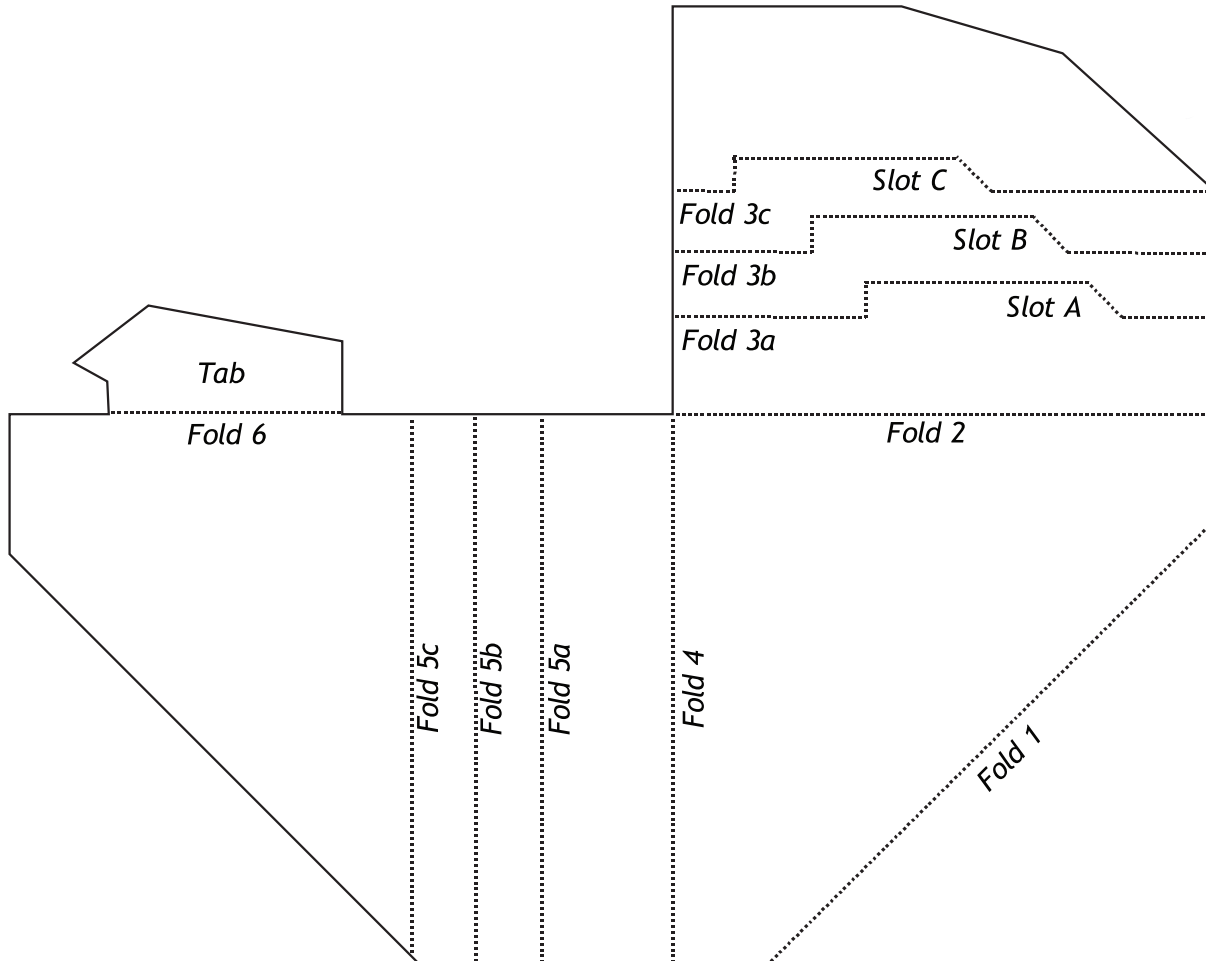




The Peep Squirrel™ Corner Protector Instructions



Corner Protectors can be folded for $\frac{1}{2}$, 1 and $1\frac{1}{2}$ inch thick board(s).

1. Place white surface down.
2. Fold at 1 and 2.
3. Fold at 3a, 3b or 3c.
4. Fold at 4.
5. Fold at 5a, 5b or 5c.
6. Fold at 6 and insert tab into slot A, B, or C.
7. Be sure that the corner tab (Fold 1) is inside the corner protector.

Completed corner protector
affixed to a frame.

